

CBG Seeds

Exclusively available here, Breeder's Best is now accepting bids for purchase of high CBG seeds for the "Anomaly" variety ranging from 11-15% CBG virtually undetectable levels of THC and CBD.



This unique and rare variety of rich CBG Cannabis (hemp) was developed and bred from a single unique hemp plant discovered in a hemp field in Manassa, Colorado in 2018. This plant was pollinated by a high CBD plant from which 22 seeds were produced before the end of her life cycle. Over two years, through crossing, selfing, back-crossing and crossing again, then testing thousands of seedlings, this strain has been stabilized to produce high CBG, virtually no THC and **high percentages of unique medicinally active terpenes** which include myrcene, a-pinene, limonene, b-pinene, beta-caryophyllene, nerolidol, citronellol and more. **Through genetic sequencing by Medicinal Genomics, Anomaly has been confirmed to carry a rare double mutation which produces no detectable CBD or THC.**

This variety and these seeds are the subject of a pending US patent application with all related international IP rights reserved and will come with a license which will provide freedom to operate.

Only 350,000 seeds are available now. Two million seeds will be available in Fall 2021. The seeds are:

- High CBG
- Virtually undetectable CBD and THC
- Powdery Mildew Resistant
- Early to mid-season finish
- Hybrid indica-dominant phenotype
- Thick, sturdy stems for wind-resistance
- High germination rate >98%
- Feminized seeds with rate of 1 male/5000
- Super rapid and vigorous growth out of the husk
- High terpene producer.

# Seeds:	350,000 available now
Yield/acre:	1000-4000 lbs depending on water and climate.
Plants/acre	1700-2000

Germination rate	98% - Feminized seeds. Less than 1 male per 5000 plants
Powdery Mildew Resistant	YES
Terpenes	Myrcene, a-Pinene, & Limonene dominant
Price	\$1/seed

ACQUISITION DETAILS

1. Please fill out the form on this page to submit your bid.
2. Bid submission deadline is 5pm PST May 26th.
3. Buyers will be required to sign a material transfer agreement which prohibits seed collection, breeding and cloning with this variety.
4. All parties will be notified on May 28th if they are a bid winner or will be placed on the wait list for the fall seeds.
5. Send questions to bids@breedersbest.com.
6. The floor price is \$1 per seed.

Certificate of Analysis (COA)

Multiple COAs were conducted on this variety. They are as follows.

Hemp Maiden
2778 Agua Fria Building C
Santa Fe, NM 87507
Client Sample ID: 320-Left
320-Left
Plant, Hemp

Sample: 0007.8151

Strain: Hemp

Sample Received: 10/01/2020; Report Created: 10/02/2020



Cannabinoids

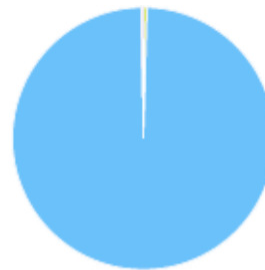
0.03%
Maximum THC*

0.04%
Maximum CBD**

Analyte	Mass	Mass
	%	mg/g
THCa	0.03	0.3
Δ9-THC	<0.01	<0.1
Δ8-THC	<0.01	<0.1
THCVa	NR	NR
THCV	NR	NR
CBDa	0.05	0.5
CBD	<0.01	<0.1
CBDVa	<0.01	<0.1
CBDV	NR	NR
CBN	<0.01	<0.1
CBGa	11.45	114.5
CBG	NR	NR
CBCa	NR	NR
CBC	NR	NR
CBLa	NR	NR
Total	11.53	115.3

Fraction of Measured Cannabinoids

■ CBDa ■ CBGa ■ THCa



Total THC = THCa * 0.877 + d9-THC
Total CBD = CBDa * 0.877 + CBD
LOQ = Limit of Quantitation; NR = Not Reported because Not Tested; Tested in accordance with Scepter SOP #11.v2.1 utilizing HPLC



Hemp Maiden
2778 Agua Fria Building C
Santa Fe, NM 87507
Client Sample ID: 320-Right
320-Right
Plant, Hemp

Sample: 0007.8152

Strain: Hemp

Sample Received: 10/01/2020; Report Created: 10/02/2020

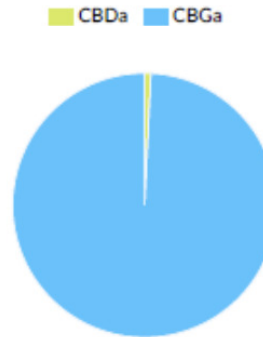


Cannabinoids

<LOQ Maximum THC*	0.08% Maximum CBD**
--------------------------------	-------------------------------

Analyte	Mass %	Mass mg/g
THCa	<0.01	<0.1
Δ9-THC	<0.01	<0.1
Δ8-THC	<0.01	<0.1
THCVa	NR	NR
THCV	NR	NR
CBDa	0.09	0.9
CBD	<0.01	<0.1
CBDVa	<0.01	<0.1
CBDV	NR	NR
CBN	<0.01	<0.1
CBGa	11.71	117.1
CBG	NR	NR
CBCa	NR	NR
CBC	NR	NR
CBLa	NR	NR
Total	11.80	118.0

Fraction of Measured Cannabinoids



Total THC = THCa * 0.877 + Δ9-THC
Total CBD = CBDa * 0.877 + CBD
LOQ = Limit of Quantitation; NR = Not Reported because Not Tested; Tested in accordance with Scepter SOP #11. v.2.1 utilizing HPLC



Hemp Maiden
2778 Agua Fria Building C
Santa Fe, NM 87507
Client Sample ID: 320 S1-B
320 S1-B

Sample: 0009.9238

Strain: Hemp

Sample Received: 11/02/2020; Report Created: 11/02/2020

Plant, Hemp

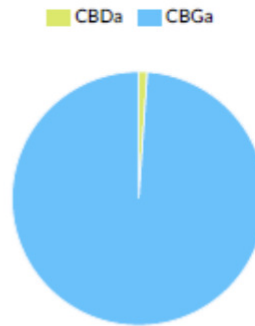


Cannabinoids

<LOQ	0.11%
Maximum THC*	Maximum CBD**

Analyte	Mass %	Mass mg/g
THCa	<0.01	<0.1
Δ9-THC	<0.01	<0.1
Δ8-THC	<0.01	<0.1
THCVa	NR	NR
THCV	NR	NR
CBDa	0.12	1.2
CBD	<0.01	<0.1
CBDVa	<0.01	<0.1
CBDV	NR	NR
CBN	<0.01	<0.1
CBGa	10.98	109.8
CBG	NR	NR
CBCa	NR	NR
CBC	NR	NR
CBLa	NR	NR
Total	11.10	111.0

Fraction of Measured Cannabinoids



Total THC = THCa * 0.877 + Δ9-THC
Total CBD = CBDa * 0.877 + CBD
LOQ = Limit of Quantitation; NR = Not Reported because Not Tested; Tested in accordance with Scepter SOP #11. v.2.1 utilizing HPLC



Hemp Maiden
2778 Agua Fria Building C
Santa Fe, NM 87507
Client Sample ID: 320 S1 - C
320 S1 - C
Plant, Hemp

Sample: 0009.3968

Strain: Hemp

Sample Received: 05/11/2021; Report Created: 05/12/2021



Cannabinoids

0.03%

Maximum THC*

<LOQ

Maximum CBD**

Analyte	Mass %	Mass mg/g
THCa	0.03	0.3
Δ9-THC	<0.01	<0.1
Δ8-THC	NR	NR
THCVa	NR	NR
THCV	NR	NR
CBDa	<0.01	<0.1
CBD	<0.01	<0.1
CBDVa	<0.01	<0.1
CBDV	NR	NR
CBN	<0.01	<0.1
CBGa	12.58	125.8
CBG	NR	NR
CBCa	NR	NR
CBC	NR	NR
CBLa	NR	NR
Total	12.61	126.1

Fraction of Measured Cannabinoids

■ CBGa ■ THCa

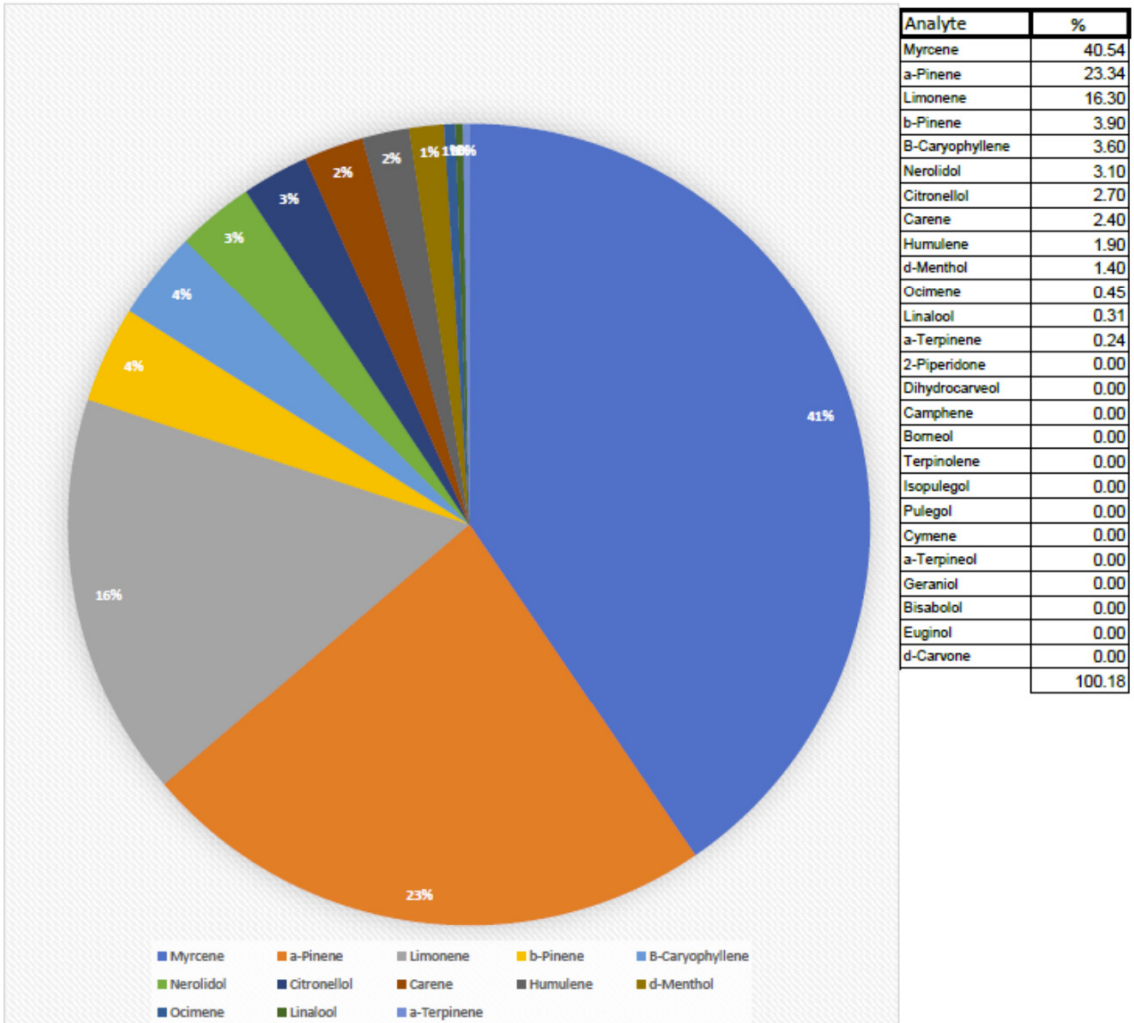


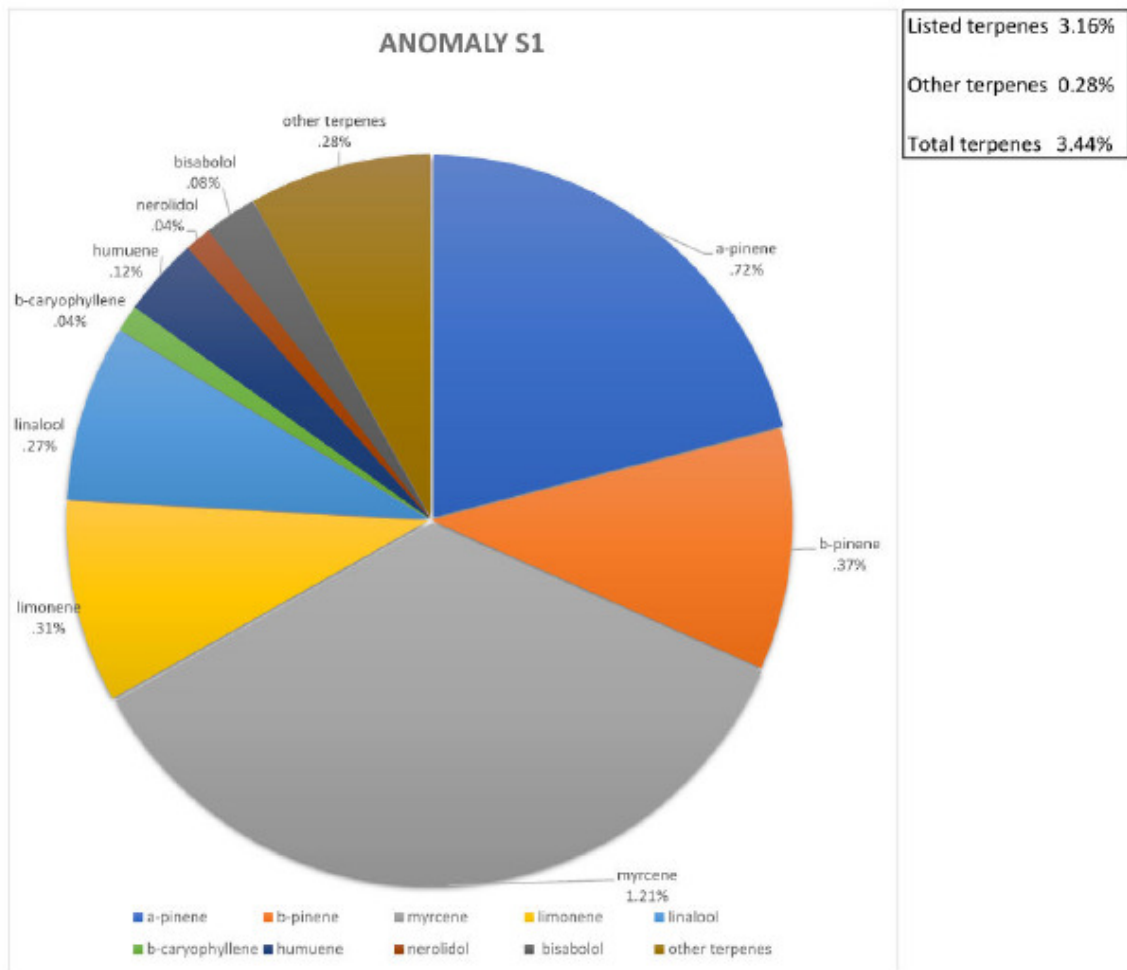
Total THC = THCa * 0.877 + d9-THC
Total CBD = CBDa * 0.877 + CBD
LOQ = Limit of Quantitation; NR = Not Reported because Not Tested; Tested in accordance with Scepter SOP #11. v.2.1 utilizing HPLC



Terpene	Reference Standard	Test Sample				
Terpenes	Area	Area	Amount ug/ml	Dilution Factor	Terpene wt ug/ml	terpenes % by weight
a-pinene	170.64	1960.86	28727.28	0.25	7181.75	0.72
b-pinene	265.72	1930.91	14918.69	0.25	3729.67	0.37
myrcene	348.99	6734.78	48244.83	0.25	12061.21	1.21
limonene	161.69	808.06	12493.34	0.25	3123.33	0.31
linalool	38.03	166.98	10975.19	0.25	2743.79	0.27
b-caryophyllene	320.24	188.85	1468.75	0.25	367.19	0.04
humulene	20.33	38.69	4758.41	0.25	1189.61	0.12
nerolidol	40.25	23.78	1477.17	0.25	369.29	0.04
bisabolol	66.09	86.21	3260.38	0.25	815.09	0.08
		11,933			Listed terpenes 3.16%	
					Other terpenes 0.28%	

Percent of Measured Terpenes





Terpene	Test Sample:	Anomalys1				
	Area	Amount ug/ml	Dilution Factor	Terpene wt ug/ml	terpenes % by weight	
a-pinene	1960.86	28727.28	0.25	7181.75	0.72	
b-pinene	1930.91	14918.69	0.25	3729.67	0.37	
myrcene	6734.78	48244.83	0.25	12061.21	1.21	
limonene	808.06	12493.34	0.25	3123.33	0.31	
linalool	166.98	10975.19	0.25	2743.79	0.27	
b-caryophyllene	188.85	1468.75	0.25	367.19	0.04	
humuene	38.69	4758.41	0.25	1189.61	0.12	
nerolidol	23.78	1477.17	0.25	369.29	0.04	
bisabolol	86.21	3260.38	0.25	815.09	0.08	
other terpenes					0.28	

Photo Gallery









